



Images used for illustrative purposes only

\$426,950
 Lot 247 Bremer Road East of Beach
 Lot Size: 370 m2 - Corner Lot

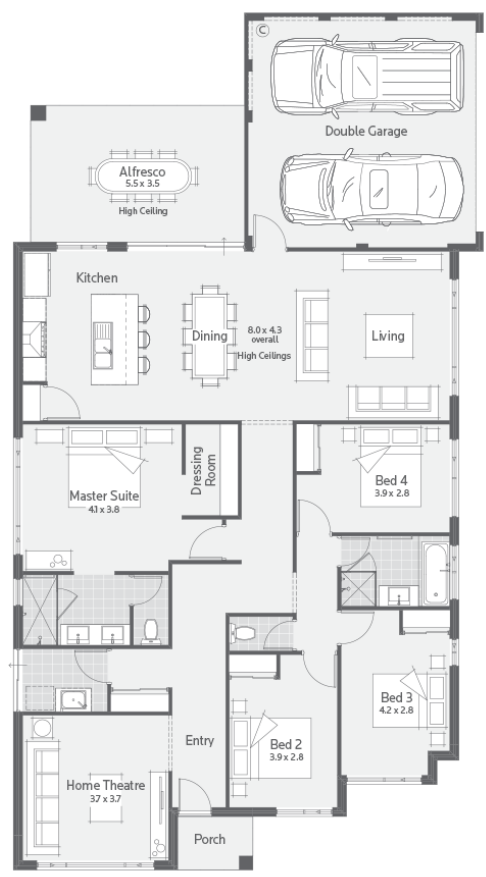
- \$211,900 home price
- \$195,000 land price
- \$20,050 siteworks, & BAL

About East of Beach Estate Alkimos

- Private Estate
- Elevated with stunning outlooks towards ocean & Inland
- Walking distance to future train stations
- Walking distance to schools
- Short drive to shops & surrounding amenity .

As well as the hugely impressive Dale's Specification, you also get these bonus inclusions:

- 20mm Caesarstone benchtops to kitchen, ensuite, bathrooms & laundry
- High 31c ceilings to living, dining & alfresco
- Quality carpets and floor tiling throughout
- Premium Reece taps, sinks, basins and showerheads
- Ducted reverse cycle air conditioning
- Sliding robes to minor bedrooms
- Termimesh stainless steel termite treatment



The Eucla 4 2

Mike Ham | 0404 058 686 | mham@dalealcock.com.au

Disclaimer: Photographs on this page may depict fixtures, finished and features not supplied by Dale Alcock homes and not included in the pricing specified. These may include furniture, floor coverings, window treatments and landscaping items, such as planter boxes, retaining walls, water features and items such as fencing and barbecues. Accordingly any pricing specified does not include these items unless otherwise stated. Site works costs are estimated to the best of our ability; however this may fluctuate once the site has been surveyed. The land component is not owned by Dale Alcock Homes; however we have been provided authority by the Owner. At the time of printing 15/08/17 the price was correct and the land available for sale. *Terms & conditions apply. Dale Alcock Homes Pty Ltd BC 7309.

