



19 (Lot 6) Taronga Place, Eglinton

Environmental Protection and Biodiversity Conservation Act 1999

EPBC Decision 2017/7872 Approval

Annual Compliance Report (2024)

JBS&G Australia Pty Ltd | 66145 | (Rev 0)

5 January 2024





We acknowledge the Traditional Custodians of Country throughout Australia and their connections to land, sea and community.

We pay respect to Elders past and present and in the spirit of reconciliation, we commit to working together for our shared future.

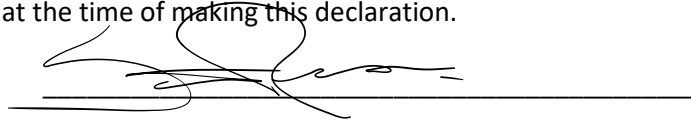
Caring for Country The Journey of JBS&G
Artist: Patrick Caruso, Eastern Arrernte



Declaration of accuracy

In making this declaration, I am aware that sections 490 and 491 of the *Environment Protection and Biodiversity Conservation Act 1999* (Cth) (EPBC Act) make it an offence in certain circumstances to knowingly provide false or misleading information or documents. The offence is punishable on conviction by imprisonment or a fine, or both. I declare that all the information and documentation supporting this compliance report is true and correct in every particular. I am authorised to bind the approval holder to this declaration and that I have no knowledge of that authorisation being revoked at the time of making this declaration.

Signed



Full name (please print)

Stuart Reside

Position (please print)

General Manager

Organisation (please print including ABN/ACN if applicable)

Urban Quarter

Date

9 / 1 / 2024

Table of Contents

1.	Introduction	3
1.1	Project Background	3
1.2	Environmental Approval to Implement the Project	3
2.	Current Status	3
3.	Audit Methodology	4
3.1	Audit Plan	4
3.1.1	Purpose & Scope	4
3.1.2	Audit Period	4
3.1.3	Methodology	4
3.1.4	Audit Terminology	4
4.	Audit Results	5
4.1	Summary of Compliance	5
4.1.1	Compliance with Conditions of EPBC 2017/7872	5
4.1.2	Conformance with the VCAMP	5
4.1.3	Public Transport Authority VCAMP Conformance	5
4.2	Potential non-compliances	5
4.3	Non-conformances	5
5.	Limitations	11
6.	References	12

List of Tables

Table 3.1:	Key Personnel Consulted for the Audit.....	4
Table 3.2:	Terminology used for the Audit (DCCEEW 2019)	4
Table 4.1:	EPBC 2017/7872 Audit Table	6
Table B.1:	Vegetation and Conservation Area Management Plan Audit Table.....	1
Table C.1:	PTA Vegetation Conservation Area Management Plan Audit Table	7

List of Figures

No table of figures entries found.

Appendices

Appendix A	EPBC 2017/7872
Appendix B	Vegetation and Conservation Area Management Plan Compliance Assessment
Appendix C	Public Transport Authority VCAMP Conformance Assessment

1. Introduction

This report addresses the status and compliance of implementation of Prime Eglinton Pty Ltd (Prime Eglinton) with the conditions of *Environment Protection and Biodiversity Conservation Act 1999* (EPBC Act) approval decision notice EPBC 2017/7872 (Appendix A) for the development of 19 (Lot 6) Taronga Place, Eglinton for residential and commercial land use. This report has been prepared for the purpose of addressing condition 8 of EPBC 2017/7872, which requires the proponent to publish annual compliance reports.

1.1 Project Background

Prime Eglinton is developing Lot 6 Taronga Place in Eglinton, Western Australia (the development) for residential and commercial use. The development involves clearing of approximately 120 ha of vegetation comprising approximately 92.25 ha of Carnaby's Black Cockatoo (*Calyptorhynchus latirostris*, [CBC]) habitat and 41.29 ha of Banksia Woodland Threatened Ecological Community (TEC) which are listed as Endangered species and habitat, respectively, under the EPBC Act.

The development includes the retention of at least 8 ha of CBC habitat and Banksia Woodland TEC, to be retained in Conservation Public Open Space (POS) areas.

1.2 Environmental Approval to Implement the Project

The action was referred to the Department of the Environment and Energy (which became the Department of Agriculture, Water and Environment (DAWE) and is now the Department of Climate Change, Energy, the Environment and Water (DCCEEW)) on 30 January 2017 and was deemed a 'controlled action' under the EPBC Act on 3 April 2017, to be assessed by preliminary documentation. The action was conditionally approved on 18 September 2018 under EPBC 2017/7872 (Appendix A).

In accordance with condition 4 of EPBC 2017/7872, Prime Eglinton was required to prepare and implement a Vegetation and Conservation Area Management Plan (VCAMP) to prevent impacts to retained areas of CBC habitat and Banksia Woodland TEC during construction. Revision 1 of the VCAMP was submitted to DEE on 2 October 2018 and subsequently approved on 3 October 2018.

The development commenced on 8 October 2018.

2. Current Status

Activities undertaken during the audit period (8 October 2022 – 7 October 2023) involved the following:

- no clearing of native vegetation other than the annual maintenance of firebreaks in October;
- no impact on or near conservation areas;
- earthworks by the PTA adjacent to rail corridor;
- civil and bulk earthworks associated with the construction of Stages 10, 11 and 12; and
- vegetation landscaping of retained vegetation within developed area (outside conservation areas).

3. Audit Methodology

3.1 Audit Plan

3.1.1 Purpose & Scope

This document has been prepared for Prime Eglinton (the proponent) to fulfil the requirements of condition 8 of EPBC 2017/7872 issued to enable implementation of the development. Condition 8 states:

‘Within three months of every 12-month anniversary of the commencement of the action, the approval holder must publish a report on their website addressing compliance with each of the conditions of this approval, including implementation of any management plans as specified in the conditions. Documentary evidence providing proof of the date of publication and non-compliance with any of the conditions of this approval must be provided to the Department at the same time as the compliance report is published. Reports must remain on the website for the life of this approval. The approval holder must continue to comply with this condition until such time as agreed to in writing by the Minister. ‘

This Annual Compliance Report (ACR) addresses the audit period between 8 October 2022 and 7 October 2023. The ACR addresses each condition of approval. Key management actions of the VCAMP were also assessed to determine if the VCAMP has been satisfactorily implemented.

3.1.2 Audit Period

This ACR addresses the twelve-month period from 8 October 2022 and 7 October 2023.

3.1.3 Methodology

The audit was undertaken in December 2023 and involved a desktop audit of evidence provided by key members of the project team. Table 3.1 provides an overview of the personnel consulted as part of the audit.

Table 3.1: Key Personnel Consulted for the Audit

Organisation	Person and Position
Urban Quarter	Stuart Reside – General Manager, Urban Quarter
Public Transport Authority (PTA)	Colin Steadman – Environment Manager

3.1.4 Audit Terminology

The ‘Status’ field of audit table (refer to Section 4.1) describes the level of compliance against the approval conditions. In 2019, the DCCEEW issued the *Independent Audit and Audit Report Guidelines for controlled actions which have been approved under Chapter 4 of the Environment Protection and Biodiversity Conservation Act 1999* (DCCEEW 2019). Terminology from this guidance has been applied in the audit and is listed below in Table 3.2.

Table 3.2: Terminology used for the Audit (DCCEEW 2019)

Term	Definition
Compliant	A rating of ‘compliance’ is given when the auditee has complied with a condition, element of a condition or measure required by a management plan, report or program, <i>etc.</i>
Potentially non-compliant	A rating of ‘non-compliance’ is given when the auditee has not met the condition, element of a condition, or measure required by a management plan, report or program, <i>etc.</i>
Not applicable	A rating of ‘not applicable at the time of the audit’ is given when the condition of element of a condition falls outside the scope of the audit, <i>e.g.</i> , if any activity has not commenced.
Conformant	All the requirements of a key management action detailed within a subsidiary plan or program have been satisfactorily met.
Potentially non-conformant	All the requirements of a key management actions detailed within a subsidiary plan or program have not been met satisfactorily.

Not applicable	The requirements of a management action fall outside of the scope of the current reporting period. For example, a condition which applies to an activity that has not yet commenced.
----------------	--

4. Audit Results

4.1 Summary of Compliance

The results of compliance of EPBC 2017/7872 are shown in Table 4.1. Condition 4 requires the preparation and implementation of the approved VCAMP. The results of conformance with the management actions contained within the VCAMP (Revision 2) are outlined in Appendix B and Appendix C (applicable to PTA management plan implementation).

4.1.1 Compliance with Conditions of EPBC 2017/7872

The audit addressed 24 sub-conditions of the EPBC 2017/7872 Approval which found:

- Twelve sub-conditions conditions were assessed as 'compliant', of which three were assessed as 'compliant (complete);
- Twelve sub-conditions were assessed as 'not applicable'; and
- no sub-conditions were assessed as 'potentially non-compliant'.

4.1.2 Conformance with the VCAMP

The audit addressed 43 commitments of the VCAMP, of which:

- Implementation of 19 commitments of the management plan were assessed as 'conformant';
- Implementation of 24 commitments of the management plan were assessed as 'not applicable'; and
- No commitments were assessed as potentially non-conformant.

4.1.3 Public Transport Authority VCAMP Conformance

The results of the compliance assessment for PTA with implementation of the VCAMP (Revision 1) are summarised in Appendix C. The results show no potential non- conformances were identified. Of the 43 VCAMP actions:

- Implementation of 16 commitments of the management plan were assessed as 'conformant';
- Implementation of 27 commitments of the management plan were assessed as 'not applicable'; and
- No commitments were assessed as potentially non-conformant.

4.2 Potential non-compliances

There were no potential non-compliances identified with respect to EPBC 2017/7872 Approval in the reporting period.

4.3 Non-conformances

There were no potential non-conformances identified with respect to the VCAMP in the reporting period.

Table 4.1: EPBC 2017/7872 Audit Table

Condition	Criteria	Timing	Verification Method	Evidence	Determination Assessment	Compliance Status
EPBC Decision 2017/7872 Condition 1:		The approval holder must not clear: <ul style="list-style-type: none"> a. Outside the project area b. more than 92.25 hectares of Carnaby's Black Cockatoo habitat c. more than 41.29 hectares of Banksia Woodlands TEC 				
1A	Clear only within the project area	Ongoing	Annual Audit	E02_Landsat Image	No clearing was undertaken in the reporting period (for Prime Eglinton or PTA works adjacent to the railway corridor). To date, 46.2 ha has been cleared within the EPBC 2017/7872 approval boundary.	Compliant
1B	Clear less than 92.25 hectares of Carnaby's Black Cockatoo habitat	Ongoing	Annual Audit	E02_Landsat Image	No clearing of CBC habitat was undertaken in the reporting period (for Prime Eglinton or PTA works adjacent to the railway corridor).	Compliant
1C	Clear less than 41.29 hectares of Banksia Woodlands TEC	Ongoing	Annual Audit	E02_Landsat Image	No clearing of Banksia Woodlands TEC was undertaken in the reporting period (for Prime Eglinton or PTA works adjacent to the railway corridor).	Compliant
EPBC Decision 2017/7872 Condition 2:		Within 7 days prior to clearing of any area of Carnaby's Black Cockatoo habitat, the approval holder must investigate and document all potential nesting trees within the area to be cleared to determine if there are any hollows that are being utilised, or are capable of being utilised, by the Carnaby's Black Cockatoos for nesting. The investigation must be undertaken by a suitably qualified person. <ul style="list-style-type: none"> a. If any Carnaby's Black Cockatoo(s) is detected utilising any hollow in any tree, the approval holder must: <ul style="list-style-type: none"> i. clearly identify and mark the nesting tree ii. maintain a register of nesting trees iii. only clear the identified nesting tree and vegetation within a 10- metre radius of that tree, if a suitably qualified person has verified that the hollow in the tree is no longer being used by the Carnaby's Black Cockatoo. b. For each cleared hollow that is being utilised, or capable of being utilised by the Carnaby's Black Cockatoo, the proponent must install at least three (3) artificial nesting hollows, where the artificial nesting hollows must be: <ul style="list-style-type: none"> i. installed within a 12 km radius of the cleared nesting tree(s) ii. constructed, positioned, erected and maintained in accordance with relevant artificial hollow guidance, to maximise the likelihood that the artificial nesting hollows are utilised by the Carnaby's Black Cockatoo iii. installed before the commencement of the following breeding season for the Carnaby's Black Cockatoo iv. inspected and maintained at least annually to check for condition and evidence of Carnaby's Black Cockatoo use. 				
2A	Investigate all potential CBC trees for potential nesting hollows being utilised or potential to be utilised within 7 days prior to clearing.	Within 7 days prior to clearing of any area of Carnaby's Black Cockatoo habitat.	Suitably Qualified professional report	Refer to EPBC 1	No clearing undertaken in the reporting period.	Not Applicable
2B	If a utilised nesting hollow is identified the tree must be marked, a register maintained and a 10m buffer of no clearing until the tree is no longer being utilised by CBC.	Within 7 days prior to clearing of any area of Carnaby's Black Cockatoo habitat.	Suitably Qualified professional report	Refer to EPBC 1	Refer to EPBC 1	Not Applicable
2C	For each cleared utilised or potentially utilised CBC nesting hollow, three artificial nesting hollows must be installed within 12km of the cleared CBC nesting tree.	Before the commencement of the following CBC breeding season	Suitably Qualified professional report	Refer to EPBC 1	Refer to EPBC 1	Not Applicable

Condition	Criteria	Timing	Verification Method	Evidence	Determination Assessment	Compliance Status
2D	Artificial nesting hollows must be inspected and maintained at least annually to check for condition and evidence of Carnaby's Black Cockatoo use.	Annually	Suitably qualified professional report	Refer to EPBC 2C	No artificial nesting hollows have been installed.	Not Applicable
EPBC Decision 2017/7872 Condition 3:		To minimise impacts to the Carnaby's Black Cockatoo and the Banksia Woodlands TEC, the approval holder must, by 1 January 2028, provide the Department with written evidence that the conservation area has been transferred to the City of Wanneroo. a. If the conservation area has not been transferred to the City of Wanneroo by 1 January 2028 the approval holder must notify the Department in writing by 7 January 2028.				
3A	Transfer 8 ha of Banksia Woodlands TEC to City of Wanneroo as POS by 01/01/2028.	By 01/01/2028	City of Wanneroo Acceptance Correspondence	C02_EPBC 20177872 -Variation to Conditions SECOFFICIAL	Proponent has until 01/01/2028 to transfer the POS to the City of Wanneroo.	Not Applicable
3B	Provide written evidence to DCCEEW of transfer of TEC to City of Wanneroo as POS by 01/01/2028.	By 01/01/2028	Written correspondence to DCCEEW	Refer to EPBC 3A	Refer to EPBC 3A	Not Applicable
3C	Notify DCCEEW by 07/01/2028 if the conservation area has not been transferred to the City of Wanneroo by the 01/01/2028.	By 07/01/2028	Written correspondence to DCCEEW	Not Applicable	Not Applicable	Not Applicable
EPBC Decision 2017/7872 Condition 4:		To mitigate impacts to the Carnaby's Black Cockatoo and the Banksia Woodlands TEC, the approval holder must prepare and submit a Vegetation and Conservation Area Management Plan (VCAMP) for the approval of the Minister. The approval holder must not commence the action unless the Minister has approved the VCAMP. The approved VCAMP must be implemented. The VCAMP must be prepared in accordance with the Department's Environmental Management Plan Guidelines and include, but not be limited to: a. measures to prevent impacts to Carnaby's Black Cockatoo habitat and Banksia Woodlands TEC during construction, including to: i. prevent and/or control site access, weeds, Phytophthora dieback, erosion, dust and fire ii. delineate the conservation area through, for example, the erection of temporary fencing or signage to avoid accidental clearing or disturbance outside of the impact area b. objectives, targets and completion criteria for post construction rehabilitation measures such as site clean-up and weed management, including information on the mapping, monitoring and removal of noxious weeds c. access control measures (e.g. fencing) to prevent or manage access to the conservation area d. bushfire control measures e. design and engineering controls to ensure that stormwater is not directed toward the conservation area and adjacent areas of vegetation and that stormwater is appropriately managed to reduce hydrological impacts and prevent the mobilisation of dieback or other contaminants f. clear objectives and performance indicators for all management actions, mitigation measures and practices prescribed by the VCAMP including details of the monitoring to be undertaken to demonstrate the effectiveness of the measures g. corrective actions for circumstances where an action, mitigation measure or practice prescribed by the VCAMP fails to meet, or is unlikely to meet, its prescribed objective, and trigger action points at which these corrective actions will be implemented h. timeframes for implementing the above measures.				
4A	The approval holder must not commence the action until the Minister has approved the VCAMP.	Prior to commencement of the action	DCCEEW approval for current version of VCAMP	JBS&G Management Advice 03/01/2024. R03_VCAMP Rev 1 C03_DEE_VCAMP Approval_03102018	VCAMP (Revision 1; October 2018) was submitted to DEE on the 02/10/2018 and was approved on 03/10/2018 (C03). There has been no revision of the VCAMP in the reporting period.	Compliant
4B	Implement the VCAMP.	Ongoing	Annual Compliance Report	R01_ACR 2023 Appendix B	Refer to Appendix B for further detail regarding implementation of the VCAMP during this audit period. The audit addressed 43 actions of the VCAMP, of which: <ul style="list-style-type: none"> 19 actions were assessed as 'conformant'; and 24 actions were assessed as 'not applicable'. 0 commitment were potentially non-conformant 	Compliant

Condition	Criteria	Timing	Verification Method	Evidence	Determination Assessment	Compliance Status
EPBC Decision 2017/7872 Condition 5:		To compensate for the loss of up to 92.25 hectares of Carnaby's Black Cockatoo habitat and 41.29 hectares of Banksia Woodlands TEC the approval holder must, within one year after the commencement of the action provide the Department with: <ul style="list-style-type: none"> a. written evidence that <ul style="list-style-type: none"> i. 380 hectares of land at Lot 5450 Wannamal Road West, Boonarring ii. 117 hectares of Carnaby's Black Cockatoo habitat and Banksia Woodlands TEC at Lot 3333 Mimegarra Road, Cataby have both been purchased and are being managed for conservation by the DBCA, using monies provided by the proponent for that purpose. <ul style="list-style-type: none"> b. the offset attributes, shapefiles and textual descriptions and maps to clearly define the location and boundaries of the offset areas, that the approval holder has transferred to the DBCA. 				
5A	The approval holder must provide evidence that 380 ha of land at Lot 5450 Wannamal Road West, Boonarring has been purchased and is managed by DBCA at the approval holder's expense	Within one year after commencement of action	Communication with DCCEEW including offset attributes, shapefiles and textual descriptions and maps	R02_64186 Taronga Place EPBC ACR 2021-2022 (Rev 1)	This item was assessed as 'Compliant (Complete)' in the 2019 ACR	Compliant (Complete)
5B	The approval holder must provide evidence that 117 ha of land at Lot 3333 Mimegarra Road, Cataby has been purchased and is managed by DBCA at the approval holder's expense	Within one year after commencement of action	Communication with DCCEEW including offset attributes, shapefiles and textual descriptions and maps	R02_64186 Taronga Place EPBC ACR 2021-2022 (Rev 1)	This item was assessed as 'Compliant (Complete)' in the 2019 ACR	Compliant (Complete)
EPBC Decision 2017/7872 Condition 6:		Within 30 days after the commencement of the action, the approval holder must advise the Department in writing of the actual date of commencement.				
6	Notify DCCEEW of the action commencement date within 30 days	Within 30 days of commencement of the action.	Notification to DCCEEW	R02_64186 Taronga Place EPBC ACR 2021-2022 (Rev 1)	This item was assessed as 'Compliant (Complete)' in the 2019 ACR	Compliant (Complete)
EPBC Decision 2017/7872 Condition 7:		The approval holder must maintain accurate records substantiating all activities associated with or relevant to the conditions of approval, including measures taken to implement the VCAMP required by this approval (Condition 4), and make them available upon request to the Department. Such records may be subject to audit by the Department or an independent auditor in accordance with section 458 of the EPBC Act, or used to verify compliance with the conditions of approval. Summaries of audits will be posted on the Department's website. The results of audits may also be published in the general media.				
7A	Accurate records substantiating compliance with the conditions of EPBC 2017/7872 approval and conformance with the implementation of the VCAMP must be maintained.	Ongoing	Annual Compliance Report	All evidence utilised to inform this ACR.	Accurate records for all applicable conditions have been maintained and were available at the time of the audit and following the audit (refer to the other items in this table and Appendix B).	Compliant
7B	Records of compliance and conformance must be made available to DCCEEW on request.	On request	Correspondence with DCCEEW.	Management Advice 18/12/2023 & 03/01/2024	DCCEEW has not made a request for records of compliance and conformance in the reporting period.	Not applicable
EPBC Decision 2017/7872 Condition 8:		Within three months of every 12 month anniversary of the commencement of the action, the approval holder must publish a report on their website addressing compliance with each of the conditions of this approval, including implementation of any management plans as specified in the conditions. Documentary evidence providing proof of the date of publication and non-compliance with any of the conditions of this approval must be provided to the Department at the same time as the compliance report is published. Reports must remain on the website for the life of this approval. The approval holder must continue to comply with this condition until such time as agreed to in writing by the Minister.				
8A	Provide evidence to the Department that a compliance report addressing compliance with each condition of the approval and implementation of the plans has been published on the proponent website.	Within three months of every 12-month anniversary of the commencement of the action	Annual Compliance Report	C01_Taronga Place_ Eglinton ACR 2022 Submission to DCCEEW R02_64186 Taronga Place EPBC ACR 2021-2022 (Rev 1)	The 2022 Prime Eglinton ACR for Taronga Place (R02) was submitted 09/01/2023 (C01) and published on the Prime Eglinton website: https://eastofthebeach.com.au/environmental-info/ . This was the Monday following the due date of the report due date of Sunday 08/01/2023.	Compliant

Condition	Criteria	Timing	Verification Method	Evidence	Determination Assessment	Compliance Status
8B	All ACRs must remain on the website for the life of the proposal.	Ongoing	Website Check	E01_Website Screenshot 2023-12-13	The 2019, 2020, 2021 and 2022 ACRs were available on the Prime Eglington East of the Beach webpage https://eastofthebeach.com.au/environmental-info/ and accessed by the auditor on 13 December 2023 (E01).	Compliant
EPBC Decision 2017/7872 Condition 9:		Upon the direction of the Minister, the person taking the action must ensure that an independent audit of compliance with the conditions of approval is conducted and a report submitted to the Minister. The independent auditor must be approved by the Minister prior to the commencement of the audit. Audit criteria must be agreed to by the Minister and the audit report must address the criteria to the satisfaction of the Minister.				
9	Where directed to undertake an independent audit by the Minister have the auditor and the audit criteria agreed to by the Minister before an independent audit is conducted and submitted to the Minister.	Ongoing	Approved Audit Criteria	Management Advice 18/12/2023 & 03/01/2024	There was no request made by the Department for an independent audit of compliance during the audit period.	Not applicable
EPBC Decision 2017/7872 Condition 10:		The approval holder may choose to revise a management plan approved by the Minister under condition 4 without submitting it for approval under section 143A of the EPBC Act, if the taking of the action in accordance with the revised plan would not be likely to have a new or increased impact. If the approval holder makes this choice, they must notify the Department in writing that the approved plan has been revised and provide the Department, at least four weeks before implementing the revised plan, with: <ul style="list-style-type: none"> a. an electronic copy of the revised plan; b. an explanation of the differences between the revised plan and the approved plan; and c. the reasons the approval holder considers that taking the action in accordance with the revised plan would not be likely to have a new or increased impact. 				
10	A management plan can be revised if taking the action in accordance with the management plan would not be likely to have a new or increased impact. The Department requires four weeks notification before the management plan can be implemented.	Ongoing	Revised Management Plan (RAMP) Notification to the Department of RAMP	JBS&G Management Advice 03/01/2024 R03_VCAMP Rev 1 C03_DEE_VCAMP Approval_03102018	There were no variations to the VCAMP during the audit period.	Not applicable
EPBC Decision 2017/7872 Condition 11:		The approval holder may revoke their choice under condition 10 at any time by notice to the Department. If the approval holder revokes the choice to implement a revised plan, without approval under section 143A of the Act, the plan approved by the Minister must be implemented.				
11	The approval holder may revoke its choice to implement a management plan under condition 10, give notice to the Department and implement the management plan in force immediately prior to the revision under condition 10.	Ongoing - at any time	Notification to the Department Audit of implementation of current MP	Not applicable	Not applicable	Not applicable
EPBC Decision 2017/7872 Condition 12:		If the Minister gives a notice to the approval holder that the Minister is satisfied that the taking of the action in accordance with the revised plan would be likely to have a new or increased impact, then: <ul style="list-style-type: none"> a. Condition 10 does not apply, or ceases to apply, in relation to the revised plan; and b. The approval holder must implement the plan approved by the Minister. To avoid any doubt, this condition does not affect any operation of conditions 10 and 11 in the period before the day the notice is given. Conditions 10, 11 and 12 are not intended to limit the operation of section 143A of the EPBC Act which allows the approval holder to submit a revised plan to the Minister for approval.				
12	The Minister can notify the approval holder that the management plan submitted under condition 10 does not apply. The approval holder must implement the plan approved by the Minister.	Ongoing - if the Minister gives notice	Notice from the Minister Approval holder submission of a MP	Not applicable	Not applicable	Not applicable

Condition	Criteria	Timing	Verification Method	Evidence	Determination Assessment	Compliance Status
EPBC Decision 2017/7872 Condition 13:		Unless otherwise agreed to in writing by the Minister, the approval holder must publish all management plans referred to in these conditions of approval on their website for the duration of this approval. Each management plan must be published on the website within 1 month of being approved by the Minister or being submitted under condition 10 and must remain on the website for the life of this approval.				
13	The approval holder must publish all plans on their website for the duration of the approval.	Within 1 month of being approved	Compliance Audit Website check	E01_Website Screenshot 2023-12-13 R03_VCAMP Rev 1	The VCAMP (Revision 1, dated 2 October 2018) was available on the Prime Eglington East of the Beach webpage https://eastofthebeach.com.au/environmental-info/ and was accessed by the auditor on 13/12/2023 (R03).	Compliant

5. Limitations

Scope of Services

This report ('the report') has been prepared by JBS&G in accordance with the scope of services set out in the contract, or as otherwise agreed, between the Client and JBS&G. In some circumstances, a range of factors such as time, budget, access and/or site disturbance constraints may have limited the scope of services. This report is strictly limited to the matters stated in it and is not to be read as extending, by implication, to any other matter in connection with the matters addressed in it.

Reliance on Data

In preparing the report, JBS&G has relied upon data and other information provided by the Client and other individuals and organisations, most of which are referred to in the report ('the data'). Except as otherwise expressly stated in the report, JBS&G has not verified the accuracy or completeness of the data. To the extent that the statements, opinions, facts, information, conclusions and/or recommendations in the report ('conclusions') are based in whole or part on the data, those conclusions are contingent upon the accuracy and completeness of the data. JBS&G has also not attempted to determine whether any material matter has been omitted from the data. JBS&G will not be liable in relation to incorrect conclusions should any data, information or condition be incorrect or have been concealed, withheld, misrepresented or otherwise not fully disclosed to JBS&G. The making of any assumption does not imply that JBS&G has made any enquiry to verify the correctness of that assumption.

The report is based on conditions encountered and information received at the time of preparation of this report or the time that site investigations were carried out. JBS&G disclaims responsibility for any changes that may have occurred after this time. This report and any legal issues arising from it are governed by and construed in accordance with the law as at the date of this report.

Environmental Conclusions

Within the limitations imposed by the scope of services, the preparation of this report has been undertaken and performed in a professional manner, in accordance with generally accepted environmental consulting practices. No other warranty, whether express or implied, is made.

The advice herein relates only to this project and all results conclusions and recommendations made should be reviewed by a competent person with experience in environmental investigations, before being used for any other purpose.

JBS&G accepts no liability for use or interpretation by any person or body other than the client who commissioned the works. This report should not be reproduced without prior approval by the client or amended in any way without prior approval by JBS&G, and should not be relied upon by other parties, who should make their own enquiries.

6. References

Department of the Environment (2014) *Annual Compliance Report Guidelines*, Commonwealth of Australia, Canberra.

Appendix A EPBC 2017/7872



Approval

Residential and Commercial Development on Lot 6 Taronga Place, Eglinton, Western Australia (EPBC 2017/7872)

This decision is made under sections 130(1) and 133 of the *Environment Protection and Biodiversity Conservation Act 1999*.

Proposed action

person to whom the approval is granted	Prime Eglinton Pty Ltd
proponent's ACN (if applicable)	ACN: 616 213 186
proposed action	To clear native vegetation to develop Lot 6, Taronga Place, Eglinton, Western Australia for residential and commercial land use [See EPBC Act Referral 2017/7872].

Approval decision

Controlling Provision	Decision
Listed threatened species and communities (sections 18 & 18A)	Approved

conditions of approval

This approval is subject to the conditions specified below.

expiry date of approval

This approval has effect until 31 December 2028.

Decision-maker

name and position	Gregory Manning Assistant Secretary Assessments (WA, SA, NT) and Post Approvals Branch
signature	
date of decision	18 September 2018

Conditions attached to the approval

1. The **approval holder** must not **clear** more than 92.25 hectares of **Carnaby's Black Cockatoo habitat** or 41.29 hectares of **Banksia Woodlands TEC** within the project area shown at Attachment 1.
2. Within 7 days prior to **clearing** of any area of **Carnaby's Black Cockatoo habitat**, the **approval holder** must investigate and document all potential nesting trees within the area to be **cleared** to determine if there are any hollows that are being utilised, or are capable of being utilised, by the **Carnaby's Black Cockatoos** for nesting. The investigation must be undertaken by a **suitably qualified person**.
 - a. If any **Carnaby's Black Cockatoo(s)** is detected utilising any hollow in any tree, the **approval holder** must:
 - i. clearly identify and mark the nesting tree
 - ii. maintain a register of nesting trees
 - iii. only clear the identified nesting tree and vegetation within a 10 metre radius of that tree, if a **suitably qualified person** has verified that the hollow in the tree is no longer being used by the **Carnaby's Black Cockatoo**.
 - b. For each **cleared** hollow that is being utilised, or capable of being utilised by the **Carnaby's Black Cockatoo**, the proponent must install at least three (3) artificial nesting hollows, where the artificial nesting hollows must be:
 - i. installed within a 12 km radius of the **cleared** nesting tree(s)
 - ii. constructed, positioned, erected and maintained in accordance with relevant **artificial hollow guidance**, to maximise the likelihood that the artificial nesting hollows are utilised by the **Carnaby's Black Cockatoo**
 - iii. installed before the commencement of the following **breeding season** for the **Carnaby's Black Cockatoo**
 - iv. inspected and maintained at least annually to check for condition and evidence of **Carnaby's Black Cockatoo** use.
3. To minimise impacts to the **Carnaby's Black Cockatoo** and the **Banksia Woodlands TEC**, the **approval holder** must, within 5 years of **commencement** of the action, provide the **Department** with written evidence that at least 8 hectares of **Carnaby's Black Cockatoo habitat** and **Banksia Woodlands TEC** has been transferred to the City of Wanneroo as **Public Open Space** for the purposes of conservation.
4. To mitigate impacts to the **Carnaby's Black Cockatoo** and the **Banksia Woodlands TEC**, the **approval holder** must prepare and submit a *Vegetation and Conservation Area Management Plan (VCAMP)* for the approval of the **Minister**. The **approval holder** must not **commence** the action unless the **Minister** has approved the VCAMP. The approved VCAMP must be implemented.

The VCAMP must be prepared in accordance with the **Department's Environmental Management Plan Guidelines** and include, but not be limited to:

- a. measures to prevent impacts to **Carnaby's Black Cockatoo habitat** and **Banksia Woodlands TEC** during construction, including to:
 - i. prevent and/or control site access, weeds, *Phytophthora* dieback, erosion, dust and fire
 - ii. delineate vegetation to be retained through, for example, the erection of temporary fencing or signage to avoid accidental **clearing** or disturbance outside of the impact area
 - b. objectives, targets and completion criteria for post construction rehabilitation measures such as site clean-up and weed management, including information on the mapping, monitoring and removal of noxious weeds
 - c. access control measures (e.g. fencing) to prevent or manage access to the areas of **Public Open Space** proposed to be retained for conservation
 - d. bushfire control measures
 - e. design and engineering controls to ensure that stormwater is not directed toward retained and adjacent areas of vegetation and that stormwater is appropriately managed to reduce hydrological impacts and prevent the mobilisation of dieback or other contaminants
 - f. clear objectives and performance indicators for all management actions, mitigation measures and practices prescribed by the VCAMP including details of the monitoring to be undertaken to demonstrate the effectiveness of the measures
 - g. corrective actions for circumstances where an action, mitigation measure or practice prescribed by the VCAMP fails to meet, or is unlikely to meet, its prescribed objective, and trigger action points at which these corrective actions will be implemented
 - h. timeframes for implementing the above measures.
5. To compensate for the loss of up to 92.25 hectares of **Carnaby's Black Cockatoo habitat** and 41.29 hectares of **Banksia Woodlands TEC** the **approval holder** must, within one year after the **commencement** of the action provide the **Department** with:
- a. written evidence that
 - i. 380 hectares of land at **Lot 5450 Wannamal Road West, Boonarring**
 - ii. 117 hectares of **Carnaby's Black Cockatoo habitat** and **Banksia Woodlands TEC** at **Lot 3333 Mimegarra Road, Cataby**
- have both been purchased and are being managed for conservation by the **DBCA**, using monies provided by the proponent for that purpose.

- b. the **offset attributes, shapefiles** and textual descriptions and maps to clearly define the location and boundaries of the **offset areas**, that the **approval holder** has transferred to the **DBCA**.
6. Within 30 days after the **commencement** of the action, the **approval holder** must advise the **Department** in writing of the actual date of **commencement**.
7. The **approval holder** must maintain accurate records substantiating all activities associated with or relevant to the conditions of approval, including measures taken to implement the VCAMP required by this approval (Condition 4), and make them available upon request to the **Department**. Such records may be subject to audit by the **Department** or an independent auditor in accordance with section 458 of the **EPBC Act**, or used to verify compliance with the conditions of approval. Summaries of audits will be posted on the **Department's** website. The results of audits may also be published in the general media.
8. Within three months of every 12 month anniversary of the **commencement** of the action, the **approval holder** must publish a report on their website addressing compliance with each of the conditions of this approval, including implementation of any management plans as specified in the conditions. Documentary evidence providing proof of the date of publication and non-compliance with any of the conditions of this approval must be provided to the **Department** at the same time as the compliance report is published. Reports must remain on the website for the life of this approval. The **approval holder** must continue to comply with this condition until such time as agreed to in writing by the **Minister**.
9. Upon the direction of the **Minister**, the **approval holder** must ensure that an independent audit of compliance with the conditions of approval is conducted and a report submitted to the **Minister**. The independent auditor must be approved by the **Minister** prior to the commencement of the audit. Audit criteria must be agreed to by the **Minister** and the audit report must address the criteria to the satisfaction of the **Minister**.
10. The **approval holder** may choose to revise a management plan approved by the **Minister** under condition 4 without submitting it for approval under section 143A of the **EPBC Act**, if the taking of the action in accordance with the revised plan would not be likely to have a **new or increased impact**. If the **approval holder** makes this choice they must notify the **Department** in writing that the approved plan has been revised and provide the **Department**, at least four weeks before implementing the revised plan, with:
 - a. an electronic copy of the revised plan;
 - b. an explanation of the differences between the revised plan and the approved plan; and
 - c. the reasons the **approval holder** considers that taking the action in accordance with the revised plan would not be likely to have a **new or increased impact**.
11. The **approval holder** may revoke their choice under condition 10 at any time by notice to the **Department**. If the **approval holder** revokes the choice to implement a revised plan,

without approval under section 143A of the Act, the plan approved by the **Minister** must be implemented.

12. If the **Minister** gives a notice to the **approval holder** that the **Minister** is satisfied that the taking of the action in accordance with the revised plan would be likely to have a **new or increased impact**, then:
 - a. Condition 10 does not apply, or ceases to apply, in relation to the revised plan; and
 - b. The **approval holder** must implement the plan approved by the **Minister**.

To avoid any doubt, this condition does not affect any operation of conditions 10 and 11 in the period before the day the notice is given.

13. Conditions 10, 11 and 12 are not intended to limit the operation of section 143A of the **EPBC Act** which allows the **approval holder** to submit a revised plan to the **Minister** for approval.
14. Unless otherwise agreed to in writing by the **Minister**, the **approval holder** must publish all management plans referred to in these conditions of approval on their website for the duration of this approval. Each management plan must be published on the website within 1 month of being approved by the **Minister** or being submitted under condition 10 and must remain on the website for the life of this approval.

Definitions

- a. **Approval holder** means the name of the person to whom this approval is granted.
- b. **Artificial hollow guidance** means WA Department of Parks and Wildlife publications "*How to design and place artificial hollows for Carnaby's cockatoos*" (2015) and "*How to monitor and maintain artificial hollows for Carnaby's cockatoo*" (2015), or as otherwise updated from time to time.
- c. **Banksia Woodlands TEC** is the **EPBC Act** listed Banksia Woodlands of the Swan Coastal Plain ecological community
- d. **Breeding season** for the **Carnaby's Black Cockatoo** is the period between 1 July and 28 February of any year.
- e. **Carnaby's Black Cockatoo** is the **EPBC Act** listed Carnaby's Black Cockatoo (*Calyptorhynchus latirostris*).
- f. **Carnaby's Black Cockatoo habitat** includes foraging, breeding, potential breeding and roosting habitat for **Carnaby's Black Cockatoo**, as defined in the *EPBC Act Referral Guidelines for three species of Western Australian black cockatoos: Carnaby's Black Cockatoo (Calyptorhynchus latirostris), (Endangered) Baudin's Black Cockatoo (Calyptorhynchus baudinii) (Vulnerable) and Forest Red-tailed Black Cockatoo (Calyptorhynchus banksii naso) (Vulnerable) (October 2012)*.
- g. **Clear, cleared or clearing** includes but is not limited to the cutting down, felling, thinning, logging, removing, killing, destroying, poisoning, ringbarking, uprooting or burning of vegetation (but not including weeds – see the *Australian weeds strategy 2017 to 2027* available from

[animals-and-weeds/review-aus-pest-animal-weed-strategy/aus-weeds-strategy](#) for further guidance).

- h. **Commence/Commencement of the action** is any works or actions (including but not limited to **clearing**, the use of construction or excavation equipment and any other site preparatory works) that will directly or indirectly impact on **Carnaby's Black Cockatoo habitat** and/or the **Banksia Woodlands TEC**, excluding any **clearing** done to support the Unexploded Ordinance Investigations provided this **clearing** only occurs in the area labeled 'Clearing Area' in Attachment 5 and does not exceed 2 ha of **Carnaby's Black Cockatoo habitat** and/or the **Banksia Woodlands TEC**.
- i. **Department** means the Commonwealth Department of Environment and Energy or any other agency that administers the **EPBC Act** from time to time and includes, where the context permits, the officers, delegates, employees and successors of the **Department**.
- j. **Department's Environmental Management Plan Guidelines** is the Environmental Management Plan Guidelines, Commonwealth of Australia 2014. Available at: <http://www.environment.gov.au/epbc/publications/environmental-management-plan-guidelines>.
- k. **EPBC Act** means the *Environment Protection and Biodiversity Conservation Act 1999* (Cth).
- l. **EPBC Environmental Offsets Policy** is the *Environment Protection and Biodiversity Conservation Act 1999 Environmental Offsets Policy* (October 2012), or as updated from time to time. Available at: <http://www.environment.gov.au/epbc/publications/epbc-act-environmental-offsets-policy>.
- m. **Lot 5450 Wannamal Road West, Boonarring** means the 380 ha of land comprising 380 hectares of **Carnaby's Black Cockatoo habitat** and 165 hectares of **Banksia Woodlands TEC** as shown in Attachment 2.
- n. **Lot 3333 Mimegarra Road, Cataby** means the 117 ha of **Carnaby's Black Cockatoo habitat** and **Banksia Woodlands TEC** as shown in Attachment 3.
- o. **Minister** means the Minister administering the **EPBC Act** including any delegate of the Minister.
- p. **New or increased impact** means a new or increased environmental impact or risk relating to any protected matter, when compared to the likely impact under an Action management plan that has been approved by the **Minister** (as outlined in the *Guidance on 'New or Increased Impact' relating to changes to approved management plans under EPBC Act environmental approvals (2017)* available from <http://www.environment.gov.au/epbc/publications/new-increased-impact-guidance>).
- q. **Offset area** means the two offset sites at **Lot 5450 Wannamal Road West, Boonarring** and **Lot 3333 Mimegarra Road, Cataby**
- r. **Offset attributes** is an excel file ('.xls') capturing relevant attributes of the **offset area**, including the corresponding **EPBC Act** reference ID number, the physical address of the **offset area**, coordinates of the boundary points in decimal degrees, the **EPBC Act** protected matters that the **offset area** compensates, any additional **EPBC Act** protected matters which benefit from the **offset area**, the size of the **offset area** in hectares and the legal mechanism used to protect and conserve the **offset area**.

- s. **Public Open Space** are the areas of **Carnaby's Black Cockatoo habitat** and **Banksia Woodlands TEC**, totalling at least 8 hectares, which will be ceded to the City of Wanneroo for ongoing management. The vegetative condition of these areas must be at least Very-Good to Excellent as shown in Attachment 4.
- t. **Shapefile** is an ESRI shapefile containing '.shp', '.shx' and '.dbf' files and other files capturing attributes of the **offset area**, including the shape, **EPBC Act** reference ID number and **EPBC Act** protected matters present at the relevant site. Attributes should also be captured in '.xls' format.
- u. **Suitably qualified person** means a person who has professional qualifications and at least three years of relevant work experience surveying for the **Carnaby's Black Cockatoo** and who can give authoritative assessment, advice and analysis on performance relative to the subject matter using relevant protocols, standards, methods or literature. If the person does not have appropriate professional qualifications, the person must have at least five years of work experience related to the subject matter and can give an authoritative assessment, advice and analysis on performance relative to the subject matter using relevant protocols, standards, methods or literature.



Attachment 1: Project Area

Scale 1:9,000 at A4



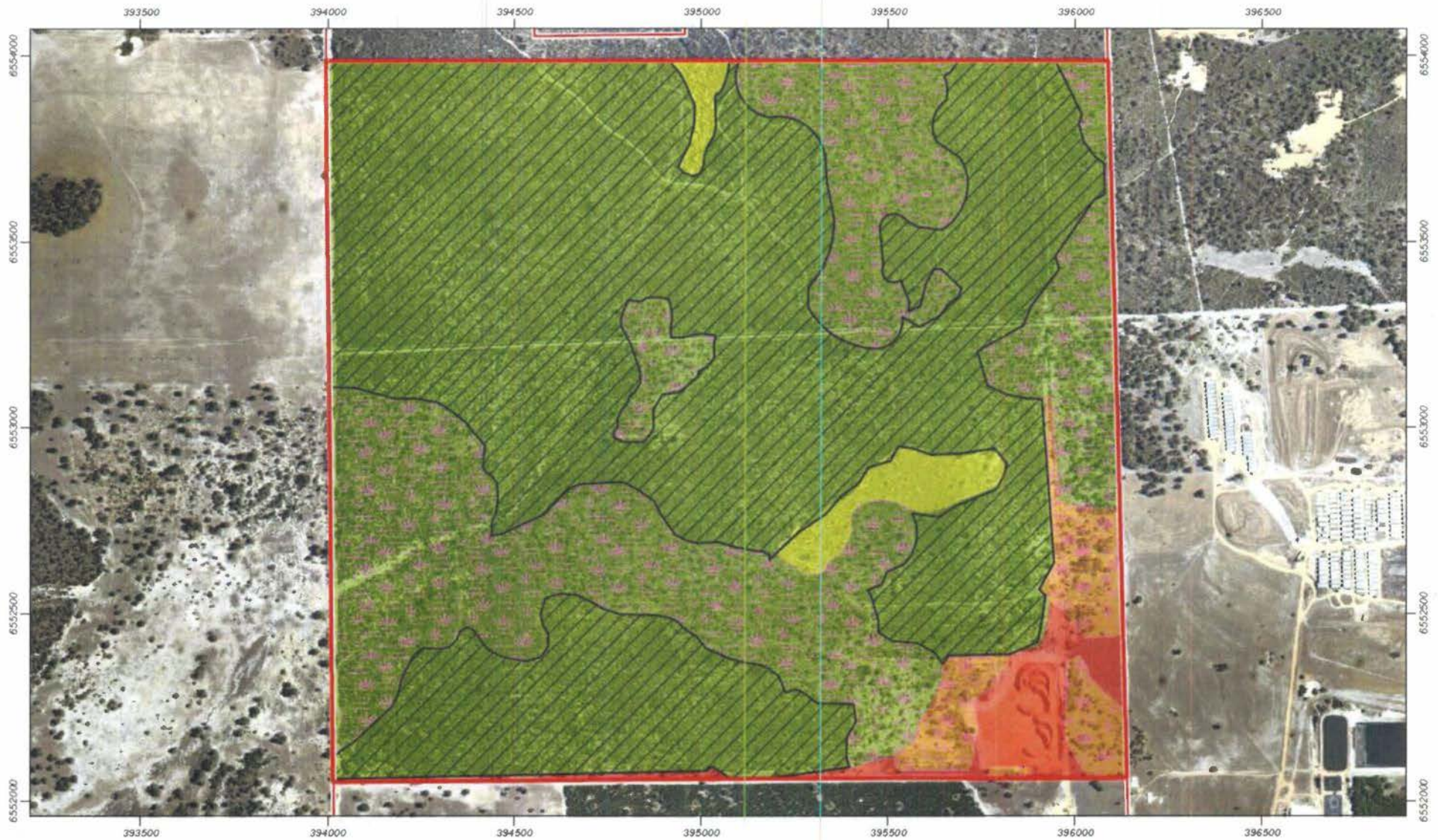
Coordinate System: GDA 1994 MGA Zone 50
 Note that positional errors may occur in some areas
 Date: 23/08/2018
 Author: C.Thatcher
 Source: Aerial image: Neamap, flown 05/2018

Legend

- Proposed action area
- Freeway and Rail reserve
- Banksia TEC

- Black cockatoo foraging habitat value 3: Low to moderate foraging value
- 4: Moderate foraging value

- 5: Moderate to high foraging value
- 6: High foraging value



Attachment 2: Lot 5450 Wannamal Road West, Boonarring

Scale 1:14,000 A4



Coordinate System: GDA 1994 MGA Zone 50
 Note that positional errors may occur in some areas
 Date: 23/06/2018
 Author: CThatcher
 Source: Aecom; Tree survey - January 2015; Banksia Woodlands - January 2015

Legend

- Offset site Lot 5450 (380 ha)
- Banksia Woodland
- Potential breeding/roosting trees

Black Cockatoo foraging quality

- 1
- 2
- 3
- 5



Attachment 3: Lot 3333 Mimegarra Road, Cataby

Scale 1:17,500 at A4



Coordinate System: GDA 1994 MGA Zone 50
 Note that positional errors may occur in some areas.
 Date: 23/08/2018
 Author: C Thatcher

Legend

- Survey area
- Offset area (117 ha)
- Banksia woodland
- Black cockatoo habitat

Service Layer Credits: Source: Esri, DigitalGlobe, GeoEye, Earthstar Geographics, CNES/Airbus DS, USDA, USGS, AeroGRID, IGN, and the GIS User Community



170@strategen.com.au
 www.strategen.com.au

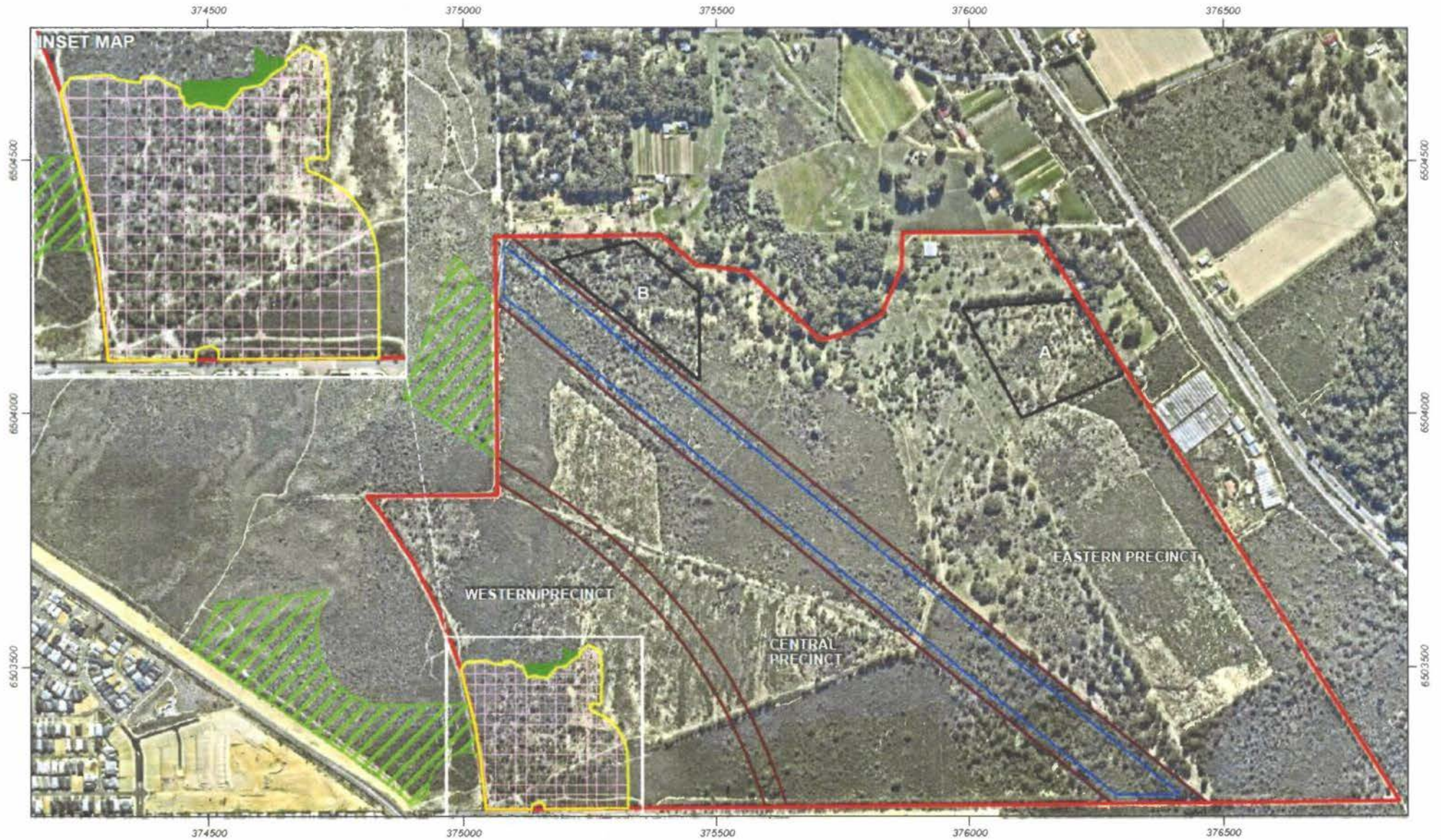


Attachment 4: Vegetation Condition of the Project Area

Scale 1:9,000 at A4
 0 100 200 m
 Coordinate System: GDA 1994 MGA Zone 50
 Note that positional errors may occur in some areas
 Date: 22/09/2018
 Author: CThatcher
 Source: Aerial image, Nearmap, flown 06/2018

Legend Proposed action area Freeway and Rail reserve	Vegetation condition Excellent (19.71 ha) Very Good - Excellent (39.90 ha)	Very Good (19.64 ha)	Degraded (1.68 ha)
		Good - Very Good (12.16 ha)	Completely Degraded (22.83 ha)
	Very Good - Excellent (39.90 ha)	Good - Degraded (33.14 ha)	





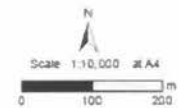
Attachment 5: Unexploded Ordnance Investigation Area

Legend

- Project Area
- Freeway and Rail Reserve
- Black Cockatoo Habitat & Banksia Woodland TEC retention areas (8ha)
- 20m Buffer
- 20m Grnd
- POS area
- Clearing area
- Retained conservation areas



Vegetation and Conservation Area Management Plan
 Lot 6 Taronga Place, Eglinton
 EPBC 2017/7872



Coordinate System: GDA 1994 MGA Zone 50
 Date: 17/09/2018

Appendix B Vegetation and Conservation Area Management Plan Compliance Assessment

Table B.1: Vegetation and Conservation Area Management Plan Audit Table

Commitment	Requirement	Timing	Evidence	Assessment	Status
Black Cockatoo habitat and Banksia Woodland TEC management					
VCAMP 1	A temporary 1.8m chain mesh fence with shade cloth will be installed in the following circumstances: <ul style="list-style-type: none"> along the project boundary to delineate between construction and adjacent property where vegetation is present on the adjacent property; and along the boundary of retained vegetation within the Project Area be it Conservation POS or other retained vegetation. 	Pre-construction	Site inspection 22/12/2023 P01_Impermeable Fencing IMG_6223 P02_Fencing Vegetation not to be Retained IMG_6221	There was no property with adjacent vegetation where construction was occurring during the reporting period present or along the boundary of vegetation within the project area to be retained (the vegetation adjacent to Stage 9 (P02) is to be cleared for the next stage of this development). Impermeable brick fencing was erected between the Development construction and PTA boundary (P01).	Conformant
VCAMP 2	Provide GPS co-ordinates of areas approved to be cleared and retained to the contractor to ensure no unapproved clearing is undertaken.	Prior to the commencement of clearing	Management Advice 22/12/2023	No clearing was conducted in the reporting period.	Not applicable
VCAMP 3	Clearly mark CBC habitat proposed to be retained on construction drawings and delineated by survey pegs and/or temporary fencing along the entire stage boundary.	Pre- & during clearing	Site inspection 22/12/2023 P03_CBC Habitat Retention IMG_6220 P04_CBC Habitat Retention IMG_6218	CBC habitat in the residential area already retained within the development (post construction) was fenced (P03, P04) with permanent fencing. CBC habitat for retention on eastern side of railway within Conservation POS a and B has not been confirmed and no fencing has been erected. Development activities remain on western side of railway and fencing will be in place prior to works commencing in 2024.	Conformant
VCAMP 4	Clearly mark trees proposed to be retained on construction drawings and by coloured tape within the Project site.	Pre- & during clearing	Refer to VCAMP 2	No clearing was undertaken in the reporting year.	No applicable
VCAMP 5	Install appropriate temporary signage where appropriate to restrict unauthorised access to retention areas (once defined).	Pre and during construction	No applicable	CBC habitat for retention on eastern side of railway has not been confirmed; no fencing has been erected however development activities in the reporting period remained on the western side of the railway.	No applicable
VCAMP 6	Maintain appropriate separation between the retention area boundaries and development area interface to control access (for example fencing, bollards, footpaths, garden beds).	Post-construction	Site inspection 22/12/2023 P03_CBC Habitat Retention IMG_6220 P04_CBC Habitat Retention IMG_6218	Retained CBC habitat within the residential development was fenced (P03, P04) with permanent fencing.	Conformant
VCAMP 7	Investigate and document potential CBC nesting trees within the area to be cleared to determine if there are any hollows being utilised or are capable of being utilised by CBC for nesting. If any CBC(s) is detected utilising any hollow in any tree, the approval holder must: clearly identify and mark the nesting tree maintain a register of nesting trees only clear the identified nesting tree and vegetation within a 10 m radius of that tree, if a suitably qualified person has verified that the hollow in the tree is no longer being used by the CBC(s).	Within 7 days of clearing, during CBC breeding season (1 July to 28 February)	Refer to VCAMP 2	No clearing was undertaken in the reporting year.	No applicable
VCAMP 8	For each cleared hollow that is being utilised, or capable of being utilised by the CBC(s), at least three artificial nesting hollows must be installed, whereby: installed within a 12 km radius of the cleared nesting tree(s) constructed, positioned, erected and maintained in accordance with relevant artificial hollow guidance, to maximise the likelihood that the artificial nesting hollows are utilised by CBC installed before the commencement of the following breeding season inspected and maintained at least annually to check for condition and evidence of CBC use.	Prior to 1 July of preceding year	Refer to VCAMP 7	Refer to VCAMP 7	No applicable

Commitment	Requirement	Timing	Evidence	Assessment	Status
VCAMP 9	Contact the Department of Biodiversity, Conservation and Attractions (DBCAs) Wildcare Helpline 24-hour emergency hotline on (08) 9474 9055 if sick or injured animals are encountered.	Within 12 hours of the sick or injured fauna being encountered and as required.	Management Advice 22/12/2023	No sick or injured wildlife were encountered in the reporting year.	Not applicable
VCAMP 10	Temporary drainage to be constructed away from retained or adjacent vegetation such that surface water flows do not interact with vegetation.	Prior to and during construction	Site inspection 12/12/2023 P06_CBC Habitat Drainage IMG_6224 P05_CBC Habitat Elevation IMG_6226	The retained vegetation within the residential development is at the highest elevation (P05) and all drainage in the area runs into the compensating basin at the adjoining park (P06). The surface water flows do not interact with the vegetation.	Conformant
VCAMP 11	Permanent fencing (as approved by the CoW) will be installed around the boundary of the Conservation POS. This fencing will also restrict unwanted fauna (i.e. kangaroos, rabbits and domestic animals) from entering Conservation POS areas.	Within four weeks of approval from CoW, post construction	Management Advice 22/12/2023 Site inspection 22/12/2023	This commitment is not applicable to the Conservation POS (post construction).	Not applicable
VCAMP 12	Educational signage to be installed to inform residents on the conservation values related to Black Cockatoo, associated with the conservation POS.	Within four weeks of approval from CoW, post construction	E08_Conservation Interpretive Sign	This commitment is not applicable to the Conservation POS (post construction). A conservation interpretive sign (E08) is to be installed where the footpath abuts the conservation area for the retained vegetation in the residential development.	Not applicable
Weed and pathogen management					
VCAMP 13	Prior to entering the Project Area, all vehicles, machinery, equipment and footwear are free of mud and soil.	At all times	E06_EOTB Washdown Register P01_Impermeable Fencing IMG_6223 P02_Fencing Vegetation not to be Retained IMG_6221	Washdowns were undertaken for all vehicles and equipment prior to entering site in the reporting period (E06). Construction works undertaken in the reporting period were completely separated from the retained vegetation by the PTA easement wall. Washdown of footwear was deemed unnecessary in the reporting period.	Conformant
VCAMP 14	Restrict access of vehicles to areas of construction to minimise the spread or introduction of weeds or pathogens. Access restrictions will be communicated through inductions, signage and fencing.	Pre- & during construction	Site inspection 22/12/2023 P01_Impermeable Fencing IMG_6223 P03_CBC Habitat Retention IMG_6220 P08_Hydromulch IMG_6200 P09_Watercart IMG_6228 E07_EOTB Site Specific Induction	The western side of the railway contains the areas under construction. Permanent fencing is present around the entire precinct and 1.8m temporary fencing (P09) separating the construction areas from the residential properties. No specific signage was observed by the auditor but the commitment for vehicle restriction was achieved. Slide 3 of the induction covers the access restrictions on site.	Conformant
VCAMP 15	Ensure any fill/soil brought onto site is certified disease free.	During construction	Management Advice 22/12/2023	A cut to fill earthworks balance was undertaken and therefore no additional fill/soil was brought onto site for the purpose of civil works during this audit period.	Conformant
VCAMP 16	If necessary, based on monitoring, develop a weed control program and appoint an experienced contractor to manage weeds within the Conservation POS areas A and B.	During construction and post-construction for a period of five years up until handover of Conservation POS areas and to CoW. Frequency will depend on the type of weeds present based on the advice of a weed control expert	Site Inspection 22/12/2023 Management Advice 22/12/2023	Conservation POS A and B on eastern side of railway has not been confirmed and weed monitoring has not been conducted. Therefore no weed control program has been developed.	Not applicable

Commitment	Requirement	Timing	Evidence	Assessment	Status
VCAMP 17	During weed control the following practices will be implemented: use of biodegradable marking dye during all spot spraying tasks installation of safety warning signage around the perimeter of the area to be controlled including information on the type of weed control and planned timing (signage shall be in place prior to application, and removed once area has dried) undertaking spraying only under calm weather as identified in the herbicide manufacturers recommendations.	During construction and post-construction for a period of 5 years up until handover of POS to CoW	Refer to VCAMP 16.	Refer to VCAMP 16.	Not applicable
VCAMP 18	All plants and other materials used in landscaping will be free of soil that may contain dieback or weeds (i.e. plants supplied by a NIASA accredited nursery).	During landscaping	Management Advice 22/12/2023	The POS was complete in the last reporting period.	Not applicable
VCAMP 19	All construction personnel will be inducted in relation to weed and dieback risk, potential impacts and management.	Prior to commencing works on site	Site inspection 22/12/2023 E07_EOTB Site Specific Induction	The induction does not specifically cover weed and dieback risk, potential impacts however slide 18 addresses protection of vegetation and slide 5 outlines management.	Conformant
VCAMP 20	Stormwater management will be designed and constructed to prevent drainage into sensitive areas, i.e. the Conservation POS to prevent the spread of weeds and pathogens.	Detailed design and construction	Site inspection 22/12/2023 P06_CBC Habitat Drainage IMG_6224 P05_CBC Habitat Elevation IMG_6226	The retained vegetation within the residential development is at the highest elevation (P05) and all drainage in the area runs into the compensating basin at the adjoining park (P06). The surface water flows do not interact with the vegetation. Conservation POS A and B on eastern side of railway has not been confirmed and no works have been undertaken on the eastern side of the railway.	Conformant
Amenity					
VCAMP 21	Earthwork contours are graded away from adjacent or retained vegetation.	Within three months of Project completion	Site inspection 22/12/2023 P02_Fencing Vegetation not to be Retained IMG_6221	Earthworks were graded away from adjacent vegetation (there was no construction near retained vegetation).	Conformant
VCAMP 22	Stabilise all slopes that are potentially subject to water run off or wind erosion.	Within three months of Project completion	Site inspection 22/12/2023 P07_Hydromulch IMG_6223 P08_Hydromulch IMG_6200	Hydro mulch application was sighted during the site inspection on cleared areas and slopes (P07, P08).	Conformant
VCAMP 23	Cleared areas will be stabilised to prevent wind-blown dust generating on site.	During construction	Site inspection 22/12/2023 P07_Hydromulch IMG_6223 P08_Hydromulch IMG_6200	Hydro mulch application was sighted during the site inspection on cleared areas and slopes (P07, P08).	Conformant
VCAMP 24	Water carts will be used in conjunction with earth moving activities and as required based on prevailing weather conditions at the time of construction works.	During construction	Management Advice 22/12/2023 Site inspection 22/12/2023 P28_Watercart IMG_6228	Water carts are regularly used on site during construction activities and were sighted in use during the site inspection (P28).	Conformant
VCAMP 25	Inspection of the construction boundary to identify any dust emissions outside the construction boundary.	During times of high winds, in accordance with Bureau of Meteorology updates and opportunistically	Management Advice 22/12/2023 Site inspection 22/12/2023	There was no construction being undertaken in the project area adjacent to CBC habitat or Banksia Woodland TEC in the reporting period.	Not applicable
VCAMP 26	The site induction will include details regarding waste management on site.	At all times	Site inspection 22/12/2023 E07_EOTB Site Specific Induction	Waste management is communicated via the site-specific induction and includes: <ul style="list-style-type: none"> site waste disposal information on rubbish dumping the removal and disposal of rubbish that may drift along the project boundary 	Conformant
VCAMP 27	Remove rubbish that may drift along the boundary before it enters retained Conservation POS or the adjacent Banksia Woodland TEC.	During clearing and construction	Site Inspection 22/12/2023 Management Advice 22/12/2023 P10_East of Railway IMG_6230 P11_East of Railway IMG_6229	No clearing or construction was conducted on the eastern side of the railway in the reporting period. Inspections of the perimeter of the property has not identified rubbish drift.	Not applicable
VCAMP 28	Removal of any rubbish that has been dumped or drifted into the retained Conservation POS area or adjacent Banksia Woodland TEC as a result of the Project construction activities.	During clearing and construction	Management Advice 22/12/2023 Site inspection 22/12/2023	There was no clearing or construction undertaken in the project area adjacent to CBC habitat or Banksia Woodland TEC in the reporting period.	Not applicable
Monitoring parameters - assessment of impacts to Black Cockatoos					

Commitment	Requirement	Timing	Evidence	Assessment	Status
VCAMP 29	<p><u>Performance Target</u> Protection of fauna and its habitat by ensuring no unauthorised clearing or earthworks</p> <p><u>Parameter Measured</u> Record of fauna expert appointed to inspect clearing area for Black Cockatoo activity and associated report/memo</p> <p><u>Where</u> Clearing areas</p>	Within 7 days of clearing during CBC breeding season (1 July to 28 February)	Management Advice 22/12/2023	No clearing undertaken in the reporting period	Not applicable
VCAMP 30	<p><u>Performance Target</u> No death or injury to Black Cockatoo caused by vehicle collisions</p> <p><u>Parameter Measured</u> Reports of fauna collisions and actions taken</p> <p><u>Where</u> Project Area</p>	As soon as possible following the incident	Management Advice 22/12/2023	The auditors were advised that there were no reports of fauna vehicle collisions during the audit period and therefore no action was required.	Not applicable
VCAMP 31	<p><u>Performance Target</u> No unauthorised loss or degradation of vegetation retained in conservation areas in or adjacent to Project Area</p> <p><u>Parameter Measured</u> No loss or degradation to Black Cockatoo habitat retained in conservation areas</p> <p><u>Where</u> Project Area</p>	Annually as a minimum when clearing and construction are taking place and/or following clearing of a stage adjacent to the Conservation POS	Site inspection 22/12/2023	No clearing or construction occurred adjacent to or has commenced within Conservation POS during or previously to the audit period.	Not applicable
VCAMP 32	<p><u>Performance Target</u> No evidence of fire in the retained Black Cockatoo habitat</p> <p><u>Parameter Measured</u> Reports of fire in the Project area and condition of the vegetation</p> <p><u>Where</u> Around retention (POS) areas</p>	As soon as possible following the incident	Management Advice 22/12/2023	There were no incidents recorded during the audit period relating to fires.	Not applicable
Monitoring parameters – assessment of impacts to Banksia Woodland TEC					
VCAMP 33	<p><u>Performance Target</u> No clearing or degradation to vegetation outside clearing boundary</p> <p><u>Parameter Measured</u> Site inspection to assess the condition of fencing used to delineate areas of retention, and barriers used to block unwanted access</p> <p><u>Where</u> Around retention areas (once defined) near clearing boundaries</p>	Fortnightly for the first 6 months following commencement of clearing and then quarterly thereafter during construction	Management Advice 22/12/2023 Site inspection 22/12/2023 RJV Advice 09/01/2024	The Conservation POS areas have not been defined or fenced. No clearing has been undertaken on the eastern side of the railway. The fencing will be erected in 2024 prior to works being undertaken. Subdivision fencing is inspected 2-monthly.	Not applicable
VCAMP 34	<p><u>Performance Target</u> No clearing or degradation to vegetation outside clearing boundary</p> <p><u>Parameter Measured</u> Approved clearing boundaries cross referenced against site inspections and/or current aerial photography</p> <p><u>Where</u> Clearing boundaries</p>	Fortnightly during clearing, or as otherwise required by regulatory authorities as part of construction site inspections	Refer to VCAMP 2	No clearing undertaken in the reporting year	Not applicable
VCAMP 35	<p><u>Performance Target</u> No evidence of fire in the retained Banksia Woodland TEC</p> <p><u>Parameter Measured</u> Cleared area not to exceed approved clearing area</p> <p><u>Where</u> Project Area</p>	Annually during construction after clearing has commenced	Refer to VCAMP 2	No clearing undertaken in the reporting year	Not applicable

Commitment	Requirement	Timing	Evidence	Assessment	Status
VCAMP 36	<p><u>Performance Target</u> No clearing or degradation to vegetation outside clearing boundary</p> <p><u>Parameter Measured</u></p> <ul style="list-style-type: none"> • Reports of fire in the Project Area • Condition of the vegetation <p><u>Where</u> Around retention (POS) areas</p>	As soon as possible following the incident	Refer to VCAMP 32	There were no incidents of fire in the reporting year	Not applicable
Monitoring parameters – weed and dieback assessment					
VCAMP 37	<p><u>Performance Target</u> No increase in weed distribution of species. No evidence of plant pathogens within the Conservation POS areas</p> <p><u>Parameter Measured</u> Site walkover to assess distribution, and abundance of weed species</p> <p><u>Where</u> Conservation POS areas, and along the boundary to adjacent vegetation</p>	Annually in Spring following commencement of construction until handover to CoW	Not applicable	This action relates to the Conservation POS areas following the commencement of construction.	Not applicable
VCAMP 38	<p><u>Performance Target</u> No evidence of Dieback in Conservation POS areas</p> <p><u>Parameter Measured</u> Site assessment undertaken by a dieback consultant to determine if dieback is present</p> <p><u>Where</u> Conservation POS areas</p>	Three years after the commencement of construction	Not applicable	This action relates to the Conservation POS three years after the commencement of construction.	Not applicable
Monitoring parameters – amenity					
VCAMP 39	<p><u>Performance Target</u> No visible signs of erosion or excessive dust within or at the boundaries of the Project Area during construction</p> <p><u>Parameter Measured</u> Site walkover to assess the extent of erosion and dust</p> <p><u>Where</u> Project Area</p>	Opportunistically during clearing and construction and/or following heavy rain and strong wind conditions	Site inspection 22/12/2023 RJV Advice 09/01/2024 P09_Watercart IMG_6228	There were no visible signs of erosion or dust within or at the boundaries of the project area during site inspection. No clearing was undertaken during the reporting period. Observations for dust and erosion are made weekly. Watercart to minimise dust is in use.	Conformant
VCAMP 40	<p><u>Performance Target</u> No visible signs of erosion or excessive dust within or at the boundaries of the Project Area during construction</p> <p><u>Parameter Measured</u> Visual inspection of earthwork slopes to monitor erosion</p> <p><u>Where</u> Project Area</p>	Opportunistically during clearing and construction and/or following heavy rain and strong wind conditions	Site inspection 22/12/2023 P02_Fencing Vegetation not to be Retained IMG_6221	The slope adjacent to stage 9 is checked following heavy rains and during strong wind conditions. Minor erosion rills were observed on the slope during site inspection.	Conformant
VCAMP 41	<p><u>Performance Target</u> No Project associated rubbish observed within the conservation areas in or adjacent to Project Area</p> <p><u>Parameter Measured</u> Site inspections to assess project associated rubbish drift/dumping in the conservation areas or along the boundary</p> <p><u>Where</u> Within the Project Area conservation areas or along the Project Area boundary</p>	Fortnightly during clearing and construction	Management Advice 22/12/2023 P10_East of Railway IMG_6230 P11_East of Railway IMG_6229	No clearing or construction was conducted on the eastern side of the railway in the reporting period. There was no project associated rubbish drift/dumping in the conservation areas or along the boundary in the reporting period.	Conformant
Section 8					

Commitment	Requirement	Timing	Evidence	Assessment	Status
VCAMP 42	<p>An induction package will be prepared and implemented by the Construction Contractor. The induction is required to be completed by all construction, associated contractors, rehabilitation and hygiene personnel. The induction package will include the following and additional information as required:</p> <ul style="list-style-type: none"> • 'no-go' and/or restricted areas, including Conservation POS, project boundary etc • CBC habitat location on site and general awareness information • Banksia TEC location on site and general awareness information • fauna and flora protection • dust management measures • safety measures, including information regarding PEE • speed limits • general housekeeping • emergency preparedness and response. 	Prior to conducting works on site	<p>Site inspection 22/12/2023</p> <p>E07_EOTB Site Specific Induction</p>	<p>The site-specific induction includes the relevant aspects to construction in the reporting period:</p> <ul style="list-style-type: none"> • fauna and flora protection • dust management measures • safety measures, including information regarding PEE • speed limits • general housekeeping • emergency preparedness and response. 	Conformant
VCAMP 43	<p>The performance of the VCAMP will be assessed annually against the performance targets in (Table 5), and will be reported on as part of the Annual Compliance Report. In the event that performance targets are not met during the reporting period, a written report will be included in the Annual Compliance Report detailing the corrective actions that were undertaken, and the effectiveness of the corrective actions to rectify any potential impacts.</p>	Annually	R01_ACR 2023 Appendix B	<p>This Annual Compliance Report Appendix B assesses the implementation of this VCAMP (except by the PTA) in the reporting period. The assessment found that:</p> <ul style="list-style-type: none"> • 19 commitments were conformant • 24 commitments were not applicable • 0 commitment were potentially non-conformant <p>The assessment found that there were no performance targets that were identified no to be met (where applicable) in the reporting period.</p>	Conformant

Appendix C Public Transport Authority VCAMP Conformance Assessment

Table C.2: PTA Vegetation Conservation Area Management Plan Audit Table

Commitment	Requirement	Timing	Evidence	Assessment	Status
Black Cockatoo habitat and Banksia Woodland TEC management					
PTA VCAMP 1	A temporary 1.8m chain mesh fence with shade cloth will be installed in the following circumstances: <ul style="list-style-type: none"> along the project boundary to delineate between construction and adjacent property where vegetation is present on the adjacent property; and along the boundary of retained vegetation within the Project Area be it Conservation POS or other retained vegetation. 	Pre-construction	PTA08_20230713 Urban Quarter north fence with shade cloth full height PTA09_20230810 Shade cloth on Urban Quarter Fence PTA10_2023713_Urban quarter fencing_south boundary PTA11_Eglington Urban Quarter Figure of fencing shade cloth location	Permanent fencing surrounds the PTA compound adjoining the eastern development boundary containing the Conservation POS (PTA10). Temporary 1.8m chain mesh fence with half shade cloth (to manage wind load on fence) has been in place in the remaining areas.	Conformant
PTA VCAMP 2	Provide GPS co-ordinates of areas approved to be cleared and retained to the contractor to ensure no unapproved clearing is undertaken.	Prior to the commencement of clearing	PTA Management Advice 21/11/2023	No clearing was conducted in the reporting period.	Not applicable
PTA VCAMP 3	Clearly mark CBC habitat proposed to be retained on construction drawings and delineated by survey pegs and/or temporary fencing along the entire stage boundary.	Pre- & during clearing	Refer to PTA VCAMP 2	No clearing was conducted in the reporting period.	Not applicable
PTA VCAMP 4	Clearly mark trees proposed to be retained on construction drawings and by coloured tape within the Project site.	Pre- & during clearing	Refer to PTA VCAMP 2	No clearing was conducted in the reporting period.	Not applicable
PTA VCAMP 5	Install appropriate temporary signage where appropriate to restrict unauthorised access to retention areas (once defined).	Pre and during construction	Not applicable	Not applicable to PTA activities	Not applicable
PTA VCAMP 6	Maintain appropriate separation between the retention area boundaries and development area interface to control access (for example fencing, bollards, footpaths, garden beds).	Post-construction	Not applicable	Not applicable to PTA activities	Not applicable
PTA VCAMP 7	Investigate and document potential CBC nesting trees within the area to be cleared to determine if there are any hollows being utilised or are capable of being utilised by CBC for nesting. If any CBC(s) is detected utilising any hollow in any tree, the approval holder must: clearly identify and mark the nesting tree maintain a register of nesting trees only clear the identified nesting tree and vegetation within a 10 m radius of that tree, if a suitably qualified person has verified that the hollow in the tree is no longer being used by the CBC(s).	Within 7 days of clearing, during CBC breeding season (1 July to 28 February)	Refer to PTA VCAMP 2	No clearing was conducted in the reporting period.	Not applicable
PTA VCAMP 8	For each cleared hollow that is being utilised, or capable of being utilised by the CBC(s), at least three artificial nesting hollows must be installed, whereby: installed within a 12 km radius of the cleared nesting tree(s) constructed, positioned, erected and maintained in accordance with relevant artificial hollow guidance, to maximise the likelihood that the artificial nesting hollows are utilised by CBC installed before the commencement of the following breeding season inspected and maintained at least annually to check for condition and evidence of CBC use.	Prior to 1 July of preceding year	Refer to PTA VCAMP 7	Refer to VCAMP 7	Not applicable
PTA VCAMP 9	Contact the Department of Biodiversity, Conservation and Attractions (DBCA) Wildcare Helpline 24-hour emergency hotline on (08) 9474 9055 if sick or injured animals are encountered.	Within 12 hours of the sick or injured fauna being encountered and as required.	PTA18 YRE Fauna Registers	PTA fauna register documents interactions with fauna across operations. No records of sick or injured animals locally however vets have been contacted on other projects and orphaned fauna taken to wildlife sanctuaries.	Not applicable

Commitment	Requirement	Timing	Evidence	Assessment	Status
PTA VCAMP 10	Temporary drainage to be constructed away from retained or adjacent vegetation such that surface water flows do not interact with vegetation.	Prior to and during construction	PTA Management Advice 21/11/2023	Earthen bunds are in place along the fence lines within the Urban Quarter area to contain any surface water run off within the site footprint. Windrows along fencing and construction roads are lower than the surrounding areas to limit water flows to adjacent vegetation	Conformant
PTA VCAMP 11	Permanent fencing (as approved by the CoW) will be installed around the boundary of the Conservation POS. This fencing will also restrict unwanted fauna (i.e. kangaroos, rabbits and domestic animals) from entering Conservation POS areas.	Within four weeks of approval from CoW, post construction	Not applicable	Not applicable to PTA activities	Not applicable
PTA VCAMP 12	Educational signage to be installed to inform residents on the conservation values related to Black Cockatoo, associated with the conservation POS.	Within four weeks of approval from CoW, post construction	Not applicable	Not applicable to PTA activities	Not applicable
Weed and pathogen management					
PTA VCAMP 13	Prior to entering the Project Area, all vehicles, machinery, equipment and footwear are free of mud and soil.	At all times	PTA13 NEWest Alliance Induction_Rev6 PTA14 NEWest Site Specific Induction V6 PTA05_20230616 Daily Pre-Start Briefing_Dieback and weeds	The NEWest Alliance induction includes the requirement for vehicle hygiene "all equipment must arrive on site certified CLEAN". NEWest Alliance vehicles and equipment remain on construction areas only and have not entered vegetated areas in the reporting period. No clearing of native vegetation was undertaken in the reporting period.	Conformant
PTA VCAMP 14	Restrict access of vehicles to areas of construction to minimise the spread or introduction of weeds or pathogens. Access restrictions will be communicated through inductions, signage and fencing.	Pre- & during construction	Site inspection 22/12/2023 PTA09_20230810_Shadecloth on Urban Quarter Fence PTA10_2023713_Urban quarter fencing_south boundary PTA05_20230616 Daily Pre-Start Briefing_Dieback and weeds	All PTA construction is contained within permanent fencing (PTA10) or 1.8m temporary fencing (PTA09) separating the construction areas from the residential properties. The induction outlines the requirement to "Brush down when EXITING weed infested areas and when ENTERING dieback UN-infested (Note: no dieback infested areas on YRE)."	Conformant
PTA VCAMP 15	Ensure any fill/soil brought onto site is certified disease free.	During construction	PTA Management Advice 21/11/2023	No fill or soil was brought on site in the reporting period	Not applicable
PTA VCAMP 16	If necessary, based on monitoring, develop a weed control program and appoint an experienced contractor to manage weeds within the Conservation POS areas A and B.	During construction and post-construction for a period of five years up until handover of Conservation POS areas and to CoW. Frequency will depend on the type of weeds present based on the advice of a weed control expert	Not applicable	Not applicable to PTA activities	Not applicable
PTA VCAMP 17	During weed control the following practices will be implemented: use of biodegradable marking dye during all spot spraying tasks installation of safety warning signage around the perimeter of the area to be controlled including information on the type of weed control and planned timing (signage shall be in place prior to application, and removed once area has dried) undertaking spraying only under calm weather as identified in the herbicide manufacturers recommendations.	During construction and post-construction for a period of 5 years up until handover of POS to CoW	Refer to PTA VCAMP 16.	Refer to VCAMP 16.	Not applicable
PTA VCAMP 18	All plants and other materials used in landscaping will be free of soil that may contain dieback or weeds (i.e. plants supplied by a NIASA accredited nursery).	During landscaping	PTA Management Advice 21/11/2023	No landscaping was undertaken by PTA in the reporting period	Not applicable

Commitment	Requirement	Timing	Evidence	Assessment	Status
PTA VCAMP 19	All construction personnel will be inducted in relation to weed and dieback risk, potential impacts and management.	Prior to commencing works on site	PTA14_NEWest Site Specific Induction V6 PTA13 NEWest Alliance Induction_Rev6	Weeds and dieback risks and associated management strategies are communicated to site personnel via the site-specific induction (PTA14). The general induction covers specific potential impacts.	Conformant
PTA VCAMP 20	Stormwater management will be designed and constructed to prevent drainage into sensitive areas, i.e. the Conservation POS to prevent the spread of weeds and pathogens.	Detailed design and construction	Not applicable	Not applicable to PTA activities	Not applicable
Amenity					
PTA VCAMP 21	Earthwork contours are graded away from adjacent or retained vegetation.	Within three months of Project completion	E03_Design drawings 02_Zone 2A Drainage plan E04_Design drawings 01_Zone 2A Drainage plan	Earthworks are graded away from adjacent vegetation (there was no construction near retained vegetation).	Conformant
PTA VCAMP 22	Stabilise all slopes that are potentially subject to water run off or wind erosion.	Within three months of Project completion	PTA Management Advice 21/11/2023	During construction slope stabilisation is addressed through ongoing monitoring, dust suppression with water carts, and application of chemical stabilisers (e.g. Glu-on) as required. Permanent stabilisation of slope will be addressed through the final landscaping design.	Conformant
PTA VCAMP 23	Cleared areas will be stabilised to prevent wind-blown dust generating on site.	During construction	Refer to PTA VCAMP 2	No clearing was conducted in the reporting period.	Not applicable
PTA VCAMP 24	Water carts will be used in conjunction with earth moving activities and as required based on prevailing weather conditions at the time of construction works.	During construction	Refer to PTA VCAMP 22	Water carts are regularly used on site during construction activities.	Conformant
PTA VCAMP 25	Inspection of the construction boundary to identify any dust emissions outside the construction boundary.	During times of high winds, in accordance with Bureau of Meteorology updates and opportunistically	PTA Management Advice 21/11/2023 PTA21_20230713_Urban Quarter dust monitor PTA15_Speed limit sign_Urban Quarter	Dust impacts are visually monitored daily by Site Supervisor, and weekly, fortnightly and monthly during NWA and PTA joint environmental inspections. Maximum 40km speed limit is signposted to reduce dust. Dust emissions are checked regularly on a dust monitor set up in the Urban Quarter stockpile site.	Conformant
PTA VCAMP 26	The site induction will include details regarding waste management on site.	At all times	PTA14_NEWest Site Specific Induction V6	Waste management is communicated via the site-specific induction and includes: <ul style="list-style-type: none"> Waste segregation Licensed waste contractors are to remove contaminants Waste Responsibilities Washout is to be contained 	Conformant
PTA VCAMP 27	Remove rubbish that may drift along the boundary before it enters retained Conservation POS or the adjacent Banksia Woodland TEC.	During clearing and construction	PTA Management Advice 21/11/2023	Checking for wind-blown litter occurs during regular NWA weekly, monthly and PTA Joint fortnightly environmental inspections. Identified waste is removed immediately.	Conformant
PTA VCAMP 28	Removal of any rubbish that has been dumped or drifted into the retained Conservation POS area or adjacent Banksia Woodland TEC as a result of the Project construction activities.	During clearing and construction	Not applicable	Not applicable to PTA activities	Not applicable
Monitoring parameters - assessment of impacts to Black Cockatoos					
PTA VCAMP 29	<u>Performance Target</u> Protection of fauna and its habitat by ensuring no unauthorised clearing or earthworks <u>Parameter Measured</u> Record of fauna expert appointed to inspect clearing area for Black Cockatoo activity and associated report/memo <u>Where</u> Clearing areas	Within 7 days of clearing during CBC breeding season (1 July to 28 February)	PTA Management Advice 21/11/2023	No clearing undertaken in the reporting period	Not applicable

Commitment	Requirement	Timing	Evidence	Assessment	Status
PTA VCAMP 30	<u>Performance Target</u> No death or injury to Black Cockatoo caused by vehicle collisions <u>Parameter Measured</u> Reports of fauna collisions and actions taken <u>Where</u> Project Area	As soon as possible following the incident	PTA Management Advice 21/11/2023	The auditors were advised that there were no reports of fauna vehicle collisions during the audit period and therefore no action was required.	Not applicable
PTA VCAMP 31	<u>Performance Target</u> No unauthorised loss or degradation of vegetation retained in conservation areas in or adjacent to Project Area <u>Parameter Measured</u> No loss or degradation to Black Cockatoo habitat retained in conservation areas <u>Where</u> Project Area	Annually as a minimum when clearing and construction are taking place and/or following clearing of a stage adjacent to the Conservation POS	PTA Management Advice 21/11/2023	No clearing or construction occurred adjacent to or has commenced within Conservation POS during or previously to the audit period.	Not applicable
PTA VCAMP 32	<u>Performance Target</u> No evidence of fire in the retained Black Cockatoo habitat <u>Parameter Measured</u> Reports of fire in the Project area and condition of the vegetation <u>Where</u> Around retention (POS) areas	As soon as possible following the incident	Refer to VCAMP 32	Refer to VCAMP 32	Not applicable
Monitoring parameters – assessment of impacts to Banksia Woodland TEC					
PTA VCAMP 33	<u>Performance Target</u> No clearing or degradation to vegetation outside clearing boundary <u>Parameter Measured</u> Site inspection to assess the condition of fencing used to delineate areas of retention, and barriers used to block unwanted access <u>Where</u> Around retention areas (once defined) near clearing boundaries	Fortnightly for the first 6 months following commencement of clearing and then quarterly thereafter during construction	Refer to VCAMP 33	Refer to VCAMP 33	Not applicable
PTA VCAMP 34	<u>Performance Target</u> No clearing or degradation to vegetation outside clearing boundary <u>Parameter Measured</u> Approved clearing boundaries cross referenced against site inspections and/or current aerial photography <u>Where</u> Clearing boundaries	Fortnightly during clearing, or as otherwise required by regulatory authorities as part of construction site inspections	Refer to PTA VCAMP 2	No clearing undertaken in the reporting year	Not applicable
PTA VCAMP 35	<u>Performance Target</u> No evidence of fire in the retained Banksia Woodland TEC <u>Parameter Measured</u> Cleared area not to exceed approved clearing area <u>Where</u> Project Area	Annually during construction after clearing has commenced	Refer to PTA VCAMP 2	No clearing undertaken in the reporting year	Not applicable
PTA VCAMP 36	<u>Performance Target</u> No clearing or degradation to vegetation outside clearing boundary <u>Parameter Measured</u> <ul style="list-style-type: none"> • Reports of fire in the Project Area • Condition of the vegetation <u>Where</u> Around retention (POS) areas	As soon as possible following the incident	Refer to VCAMP 32	Refer to VCAMP 32	Not applicable
Monitoring parameters – weed and dieback assessment					

Commitment	Requirement	Timing	Evidence	Assessment	Status
PTA VCAMP 37	<p><u>Performance Target</u> No increase in weed distribution of species. No evidence of plant pathogens within the Conservation POS areas</p> <p><u>Parameter Measured</u> Site walkover to assess distribution, and abundance of weed species</p> <p><u>Where</u> Conservation POS areas, and along the boundary to adjacent vegetation</p>	Annually in Spring following commencement of construction until handover to CoW	Refer to VCAMP 37	Refer to VCAMP 37	Not applicable
PTA VCAMP 38	<p><u>Performance Target</u> No evidence of Dieback in Conservation POS areas</p> <p><u>Parameter Measured</u> Site assessment undertaken by a dieback consultant to determine if dieback is present</p> <p><u>Where</u> Conservation POS areas</p>	Three years after the commencement of construction	Refer to VCAMP 38	Refer to VCAMP 38	Not applicable
Monitoring parameters – amenity					
PTA VCAMP 39	<p><u>Performance Target</u> No visible signs of erosion or excessive dust within or at the boundaries of the Project Area during construction</p> <p><u>Parameter Measured</u> Site walkover to assess the extent of erosion and dust</p> <p><u>Where</u> Project Area</p>	Opportunistically during clearing and construction and/or following heavy rain and strong wind conditions	PTA Management Advice 21/11/2023	Site walkover to assess the extent of dust is undertaken: <ul style="list-style-type: none"> visually daily by the Site Supervisor during NWA weekly and monthly environmental inspections during PTA/NWA fortnightly joint environmental inspections 	Conformant
PTA VCAMP 40	<p><u>Performance Target</u> No visible signs of erosion or excessive dust within or at the boundaries of the Project Area during construction</p> <p><u>Parameter Measured</u> Visual inspection of earthwork slopes to monitor erosion</p> <p><u>Where</u> Project Area</p>	Opportunistically during clearing and construction and/or following heavy rain and strong wind conditions	PTA Management Advice 21/11/2023	Evidence of erosion and erosion controls are inspected after significant rainfall events identified during NWA weekly, monthly and PTA/NWA joint fortnightly environmental inspections.	Conformant
PTA VCAMP 41	<p><u>Performance Target</u> No Project associated rubbish observed within the conservation areas in or adjacent to Project Area</p> <p><u>Parameter Measured</u> Site inspections to assess project associated rubbish drift/dumping in the conservation areas or along the boundary</p> <p><u>Where</u> Within the Project Area conservation areas or along the Project Area boundary</p>	Fortnightly during clearing and construction	Refer to VCAMP 41	Refer to VCAMP 41	Conformant
Section 8					

Commitment	Requirement	Timing	Evidence	Assessment	Status
PTA VCAMP 42	<p>An induction package will be prepared and implemented by the Construction Contractor. The induction is required to be completed by all construction, associated contractors, rehabilitation and hygiene personnel. The induction package will include the following and additional information as required:</p> <ul style="list-style-type: none"> • 'no-go' and/or restricted areas, including Conservation POS, project boundary etc • CBC habitat location on site and general awareness information • Banksia TEC location on site and general awareness information • fauna and flora protection • dust management measures • safety measures, including information regarding PEE • speed limits • general housekeeping • emergency preparedness and response. 	Prior to conducting works on site	PTA13_NEWest Alliance Induction_Rev6 PTA14_NEWest Site Specific Induction V6 PTA Management Advice 21/11/2023	<p>The NEWest Alliance induction is required to be completed by all NEWest Alliance construction personnel and includes the following:</p> <p><u>site specific</u></p> <ul style="list-style-type: none"> • Exclusion and restricted access zones • emergency preparedness and response. • safety measures, including information regarding PPE • No discharges • dust management measures • Waste management <p><u>general</u></p> <ul style="list-style-type: none"> • Flora management • Fauna management • CBC habitat location on site and general awareness information • Examples of 'no-go' and/or restricted areas <p>Speed limits are signposted on site.</p>	Conformant
PTA VCAMP 43	<p>The performance of the VCAMP will be assessed annually against the performance targets in (Table 5) and will be reported on as part of the Annual Compliance Report. In the event that performance targets are not met during the reporting period, a written report will be included in the Annual Compliance Report detailing the corrective actions that were undertaken, and the effectiveness of the corrective actions to rectify any potential impacts.</p>	Annually	R01_ACR 2023 Appendix C	<p>This Annual Compliance Report assesses the implementation of this VCAMP by the PTA in the reporting period. The assessment found that:</p> <ul style="list-style-type: none"> • 16 commitments were conformant • 27 commitments were not applicable • 0 commitment were potentially non-conformant <p>The assessment found that there were no performance targets that were identified no to be met (where applicable) in the reporting period.</p>	Conformant



Adelaide

Darwin

Berth


© JBS&G

This document is and shall remain the property of JBS&G. The document may only be used for the purposes for which it was commissioned and in accordance with the Terms of Engagement for the commission. Unauthorised use of this document in any form whatsoever is prohibited.

Document Distribution

Rev No.	Copies	Recipient	Date
0	1 × Electronic	Stuart Reside	05/01/2023

Document Status

Rev No.	Author	Reviewer	Approved for Issue		
		Name	Name	Signature	Date
0	Andrea Wills	Andrew Winzer	Andrew Winzer		05/01/2023